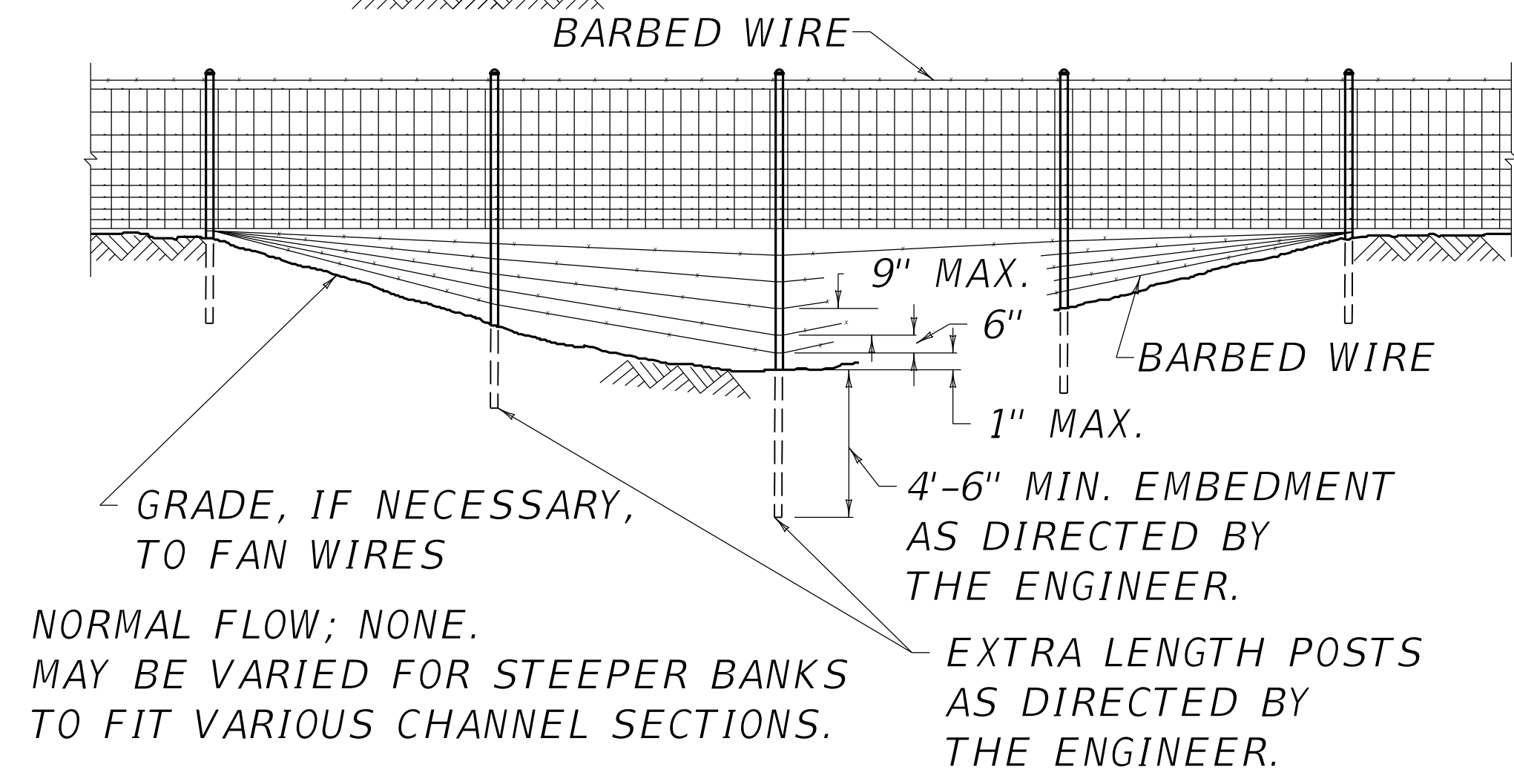
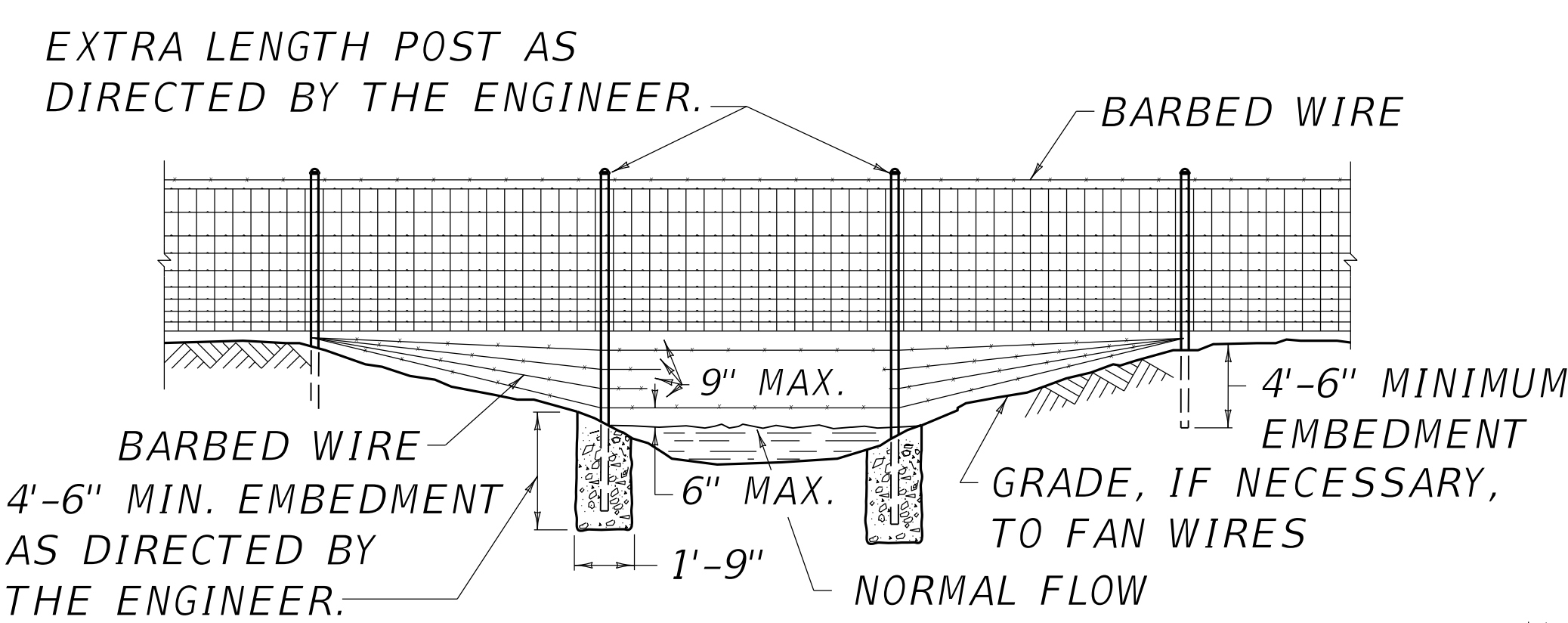


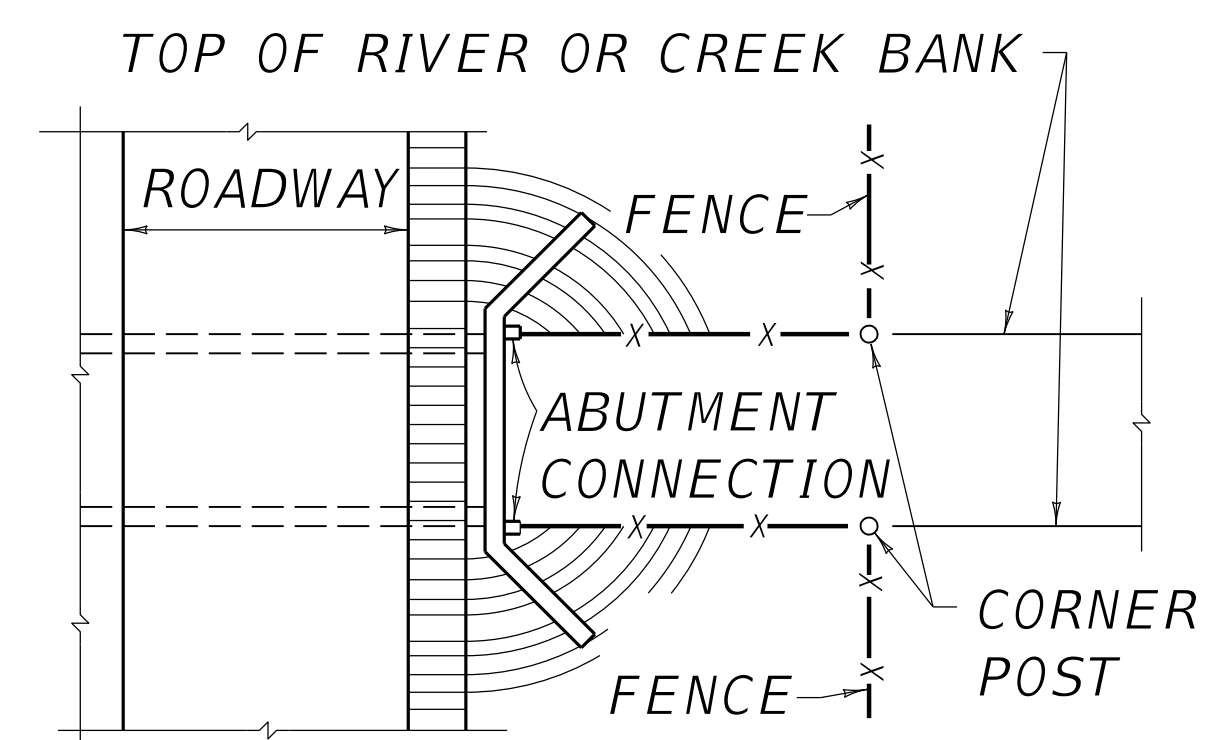
TYPICAL PULL POST INSTALLATIONS
PULL POSTS SHALL BE USED AT SHARP BREAKS IN VERTICAL ALIGNMENT AND APPROXIMATELY 500' ON CENTERS.



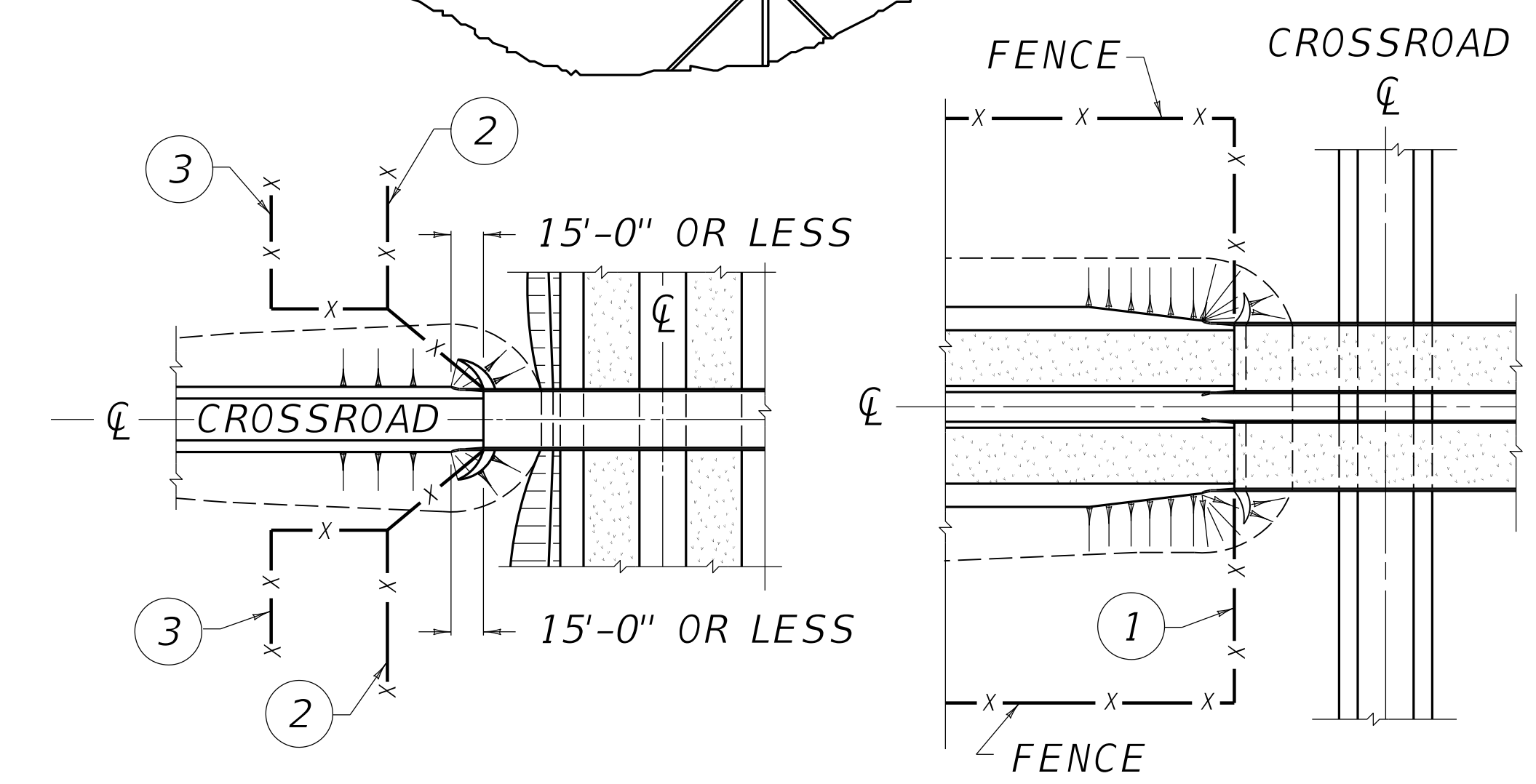
TYPE A CROSSING



TYPE B CROSSING

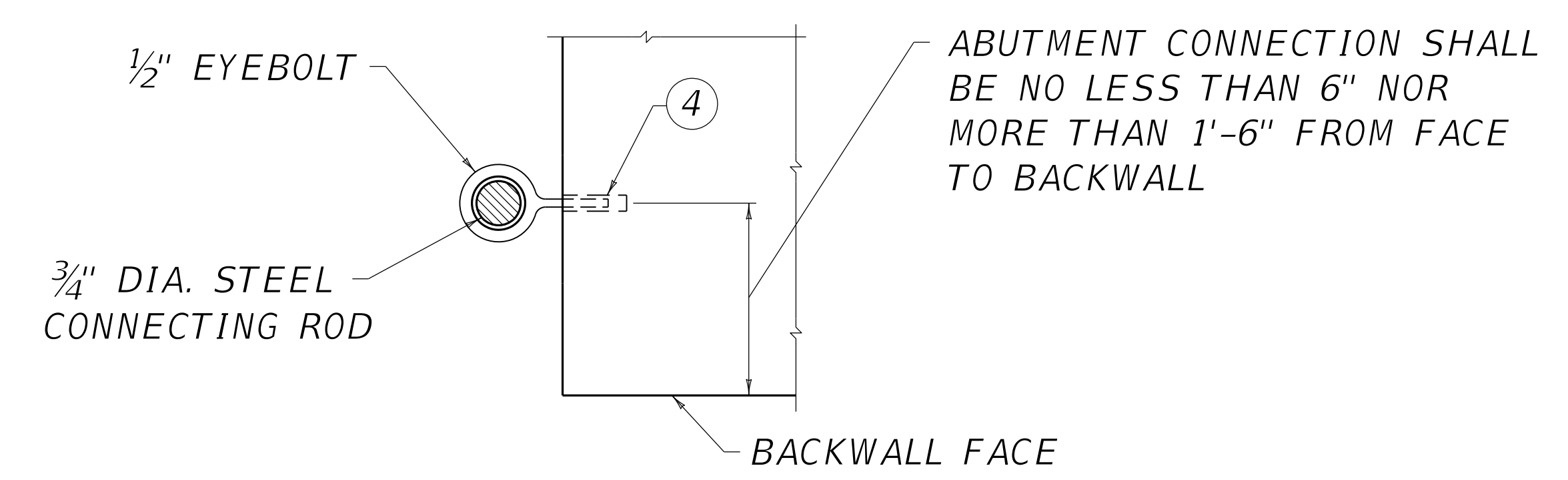


TYPICAL FENCE INSTALLATION FOR BOX CULVERT USED AS CATTLE CROSSING



HIGHWAY UNDER CROSSROAD

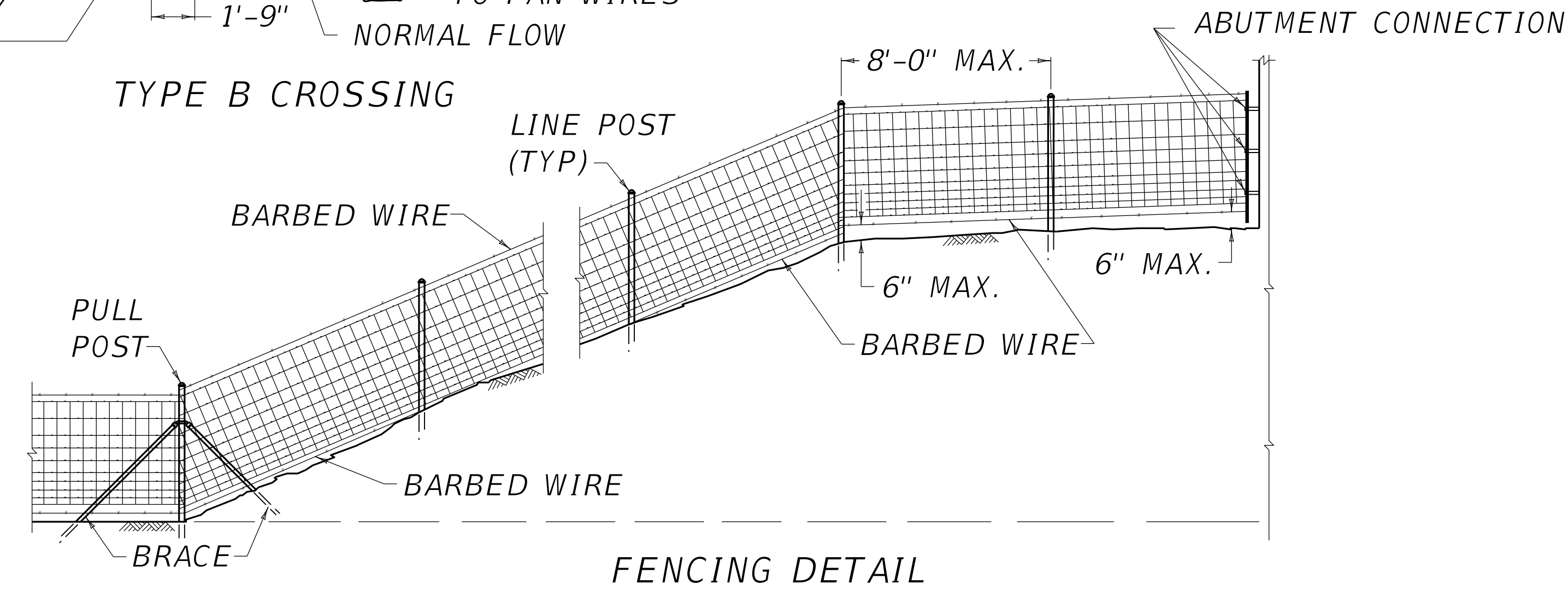
HIGHWAY OVER CROSSROAD



ABUTMENT CONNECTION

~ NOTES ~

1. NORMAL WAY OF HANDLING FENCE WHEN THE HIGHWAY IS OVER THE CROSSROAD AS SHOWN.
2. WHEN HIGHWAY RIGHT-OF-WAY IS 15'-0" OR LESS FROM THE FACE OF BACKWALL PROJECTED, ANGLE FENCE INTO ABUTMENT FROM TOE OF SLOPE AS SHOWN.
3. WHEN HIGHWAY RIGHT-OF-WAY IS GREATER THAN 15'-0" FROM THE FACE OF BACKWALL PROJECTED, ANGLE FENCE PARALLEL TO THE CENTERLINE OF CROSSROAD AND INTERSECT DETAIL 2 AS SHOWN.
4. 1/2"x2" SELF-DRILL ANCHOR AND EYEBOLT ASSEMBLY.
5. ALL MATERIAL FOR ABUTMENT CONNECTION SHALL BE GALVANIZED.



FENCING DETAIL

